

THE MANY HANDS
BOARD OF DIRECTORS
APPRECIATES YOUR GENEROUS SUPPORT.

Elizabeth Bausch
Ana Collins
Regina Hall
Ellen Kay
Leslie Lawley
Noni Lindahl
Sandi McCoy
Jill Rosenbaum Meyer
Tara Brennan Primis



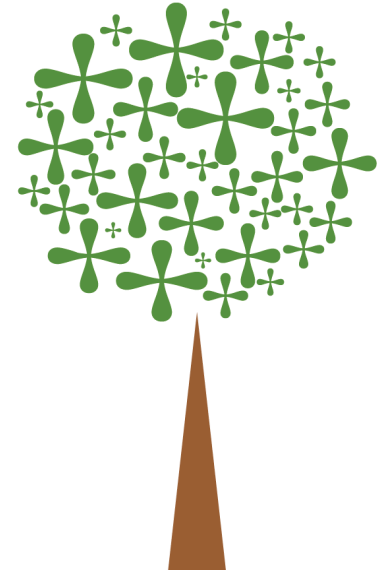
How can
100 women
make a
\$100,000
difference?

Together we can make a difference.

many+hands

Many Hands, Inc.
P.O. Box 15048
Chevy Chase, MD 20825

www.manyhandsdc.org



...by joining Many Hands with a \$1,000 donation.



Washington, D.C. has an extremely high rate of poverty among female-headed households — more than 32%. One in five children in D.C. lives below the poverty line.⁺

To help, join Many Hands.

Many Hands is a women's grantmaking organization committed to making a lasting impact on the lives of Washington, D.C. area women, children and families in need and to helping its members become well-informed donors.

The premise of Many Hands is simple, but powerful: by coming together and pooling resources, we can make a more significant and impactful donation than most can give individually.

Make a difference.

We are looking for 100 women, who want to give back to our community.

By making a tax-deductible donation of \$1,000, you can become a member of Many Hands. You may also:

- + Research nonprofits by joining a committee to focus on Health, Education, Job Readiness or Housing.
- + Make site visits to see charitable organizations in action.
- + Assess grant applications.

All \$1,000 donors can vote on which group receives our collective \$100,000 grant.

Since 2003, Many Hands has granted nearly \$1 million to local organizations serving women and children. Help us continue to have a meaningful impact in our community.

Please join us at our kick-off meeting to learn more.

October 15, 2015

7:00 p.m.

Chevy Chase Village Hall
5906 Connecticut Avenue
Chevy Chase, Maryland

R.S.V.P. by October 1st

Past \$100,000 Grantees:

2004-Our Place, D.C.
2006-Young Women's Project
2008-Pediatric AIDS/HIV Care
2010-A Wider Circle
2012-College Bound
2014-Horton's Kids

⁺ Statistics from the U.S. Census Bureau and the DC Fiscal Policy Institute, April 2014.